



# LINA ETANJ V.3

Surface Mounted 19 W Etanj LED Luminaire

Order Code : 3107080  
 Product Code : LNE 020U 40OD00 2K1 053 PG V.3



## Product Data

### Standard Features

Housing	: Aluminium extrusion housing, pg cable gland
Diffuser	: Glare controlled opal diffuser
IP Grade	: IP65
Installation	: Surface mounted
Light Source	: Mid Power LED

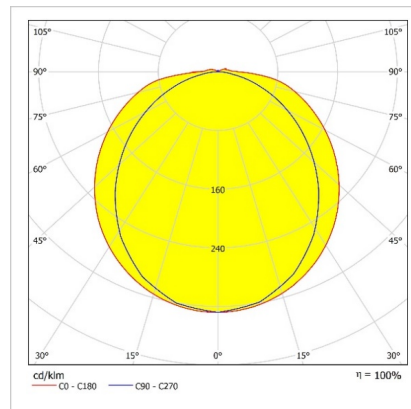
### Optical & Electrical Features

Power Consumption	: 18,9 W
Final Luminous Flux	: 2191 lm
Efficacy	: 115,6 lm/W
Input Voltage	: 220-240 V AC
Frequency	: 50-60 Hz
Power Factor	: > 0,9
Surge Transient Protection	: 1 kV
Drive Current	: 700 mA
Correlated Color Temperature	: 4000K
Color Rendering Index	: >80

### Other Features & Conditions

Operating Temperature Range	: -20 °C/+40 °C
Operating Temperature Range With Emergency Kit	: +5 °C/+35 °C
Impact Resistance	: IK09
Led Life Time - L70	: > 72.000 saat @Ta= 40 °C

## Photometric Curve



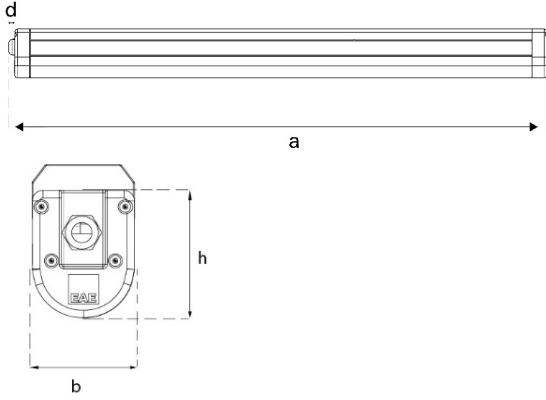
### Optional Features

Correlated Color Temperatures	: 3000K, 5700K, 6500K
Emergency Kit Options	: 1, 3 hours
DALI Option	: Yes
Sensor	: Yes

## LINA ETANJ V.3

Surface Mounted 19 W Etanj LED Luminaire

3107080 LNE 020U 400D00 2K1 053 PG V.3



### Dimension (mm)

	a	b	h	d
Standard	545	65	83	15
With Emergency Kit (1 hr.)	545	65	83	15
With Emergency Kit (3 hrs.)	545	65	83	15
With Sensor	652	65	83	15

### Weight (kg)

Standard	1,1
With Emergency Kit (1 hr.)	1,5
With Emergency Kit (3 hrs.)	2
With Sensor	1,4

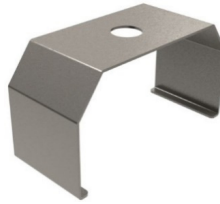


PG11 30mm

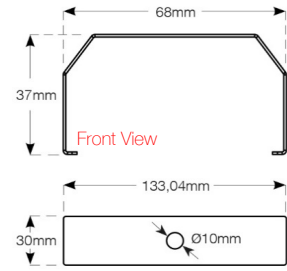


Standard Cable Dimension 50cm

### Suspension Set



Stainless steel  
suspension set



Top View

- EAE, reserves the right to make changes without prior notice.



EAE Aydınlatma A.Ş.

İkitelli Organize Sanayi Bölgesi Eski Turgut Özal Caddesi No:20 Başakşehir / İSTANBUL-TÜRKYE Phone: +90 212 413 21 00 (pbx) Fax: +90 212 549 37 90  
www.eaeaydinlatma.com.tr

Revision date: 28.06.2019