



LINA ETANJ V.3

Surface Mounted 23 W Etanj LED Luminaire

Order Code : 3107092
 Product Code : LNE 023U 40OD00 2K8 085 ST V.3



Product Data

Standard Features

Housing	: Aluminium extrusion housing
Diffuser	: Glare controlled opal diffuser
IP Grade	: IP65
Installation	: Surface mounted
Light Source	: Mid Power LED

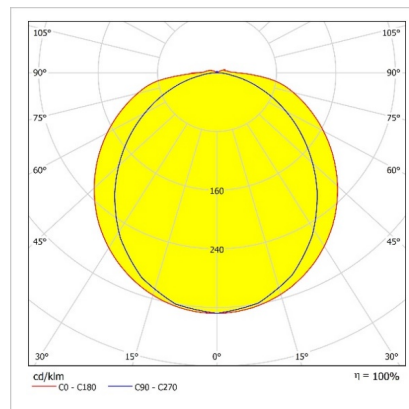
Optical & Electrical Features

Power Consumption	: 22.3 W
Final Luminous Flux	: 2860.1 lm
Efficacy	: 127.8 lm/W
Input Voltage	: 220-240 V AC
Frequency	: 50-60 Hz
Power Factor	: > 0,9
Surge Transient Protection	: 1 kV
Drive Current	: 700 mA
Correlated Color Temperature	: 4000K
Color Rendering Index	: >80

Other Features & Conditions

Operating Temperature Range	: -20 °C/+40 °C
Operating Temperature Range With Emergency Kit	: +5 °C/+35 °C
Impact Resistance	: IK09
Led Life Time - L70	: > 72.000 hours @Ta= 40 °C

Photometric Curve



Optional Features

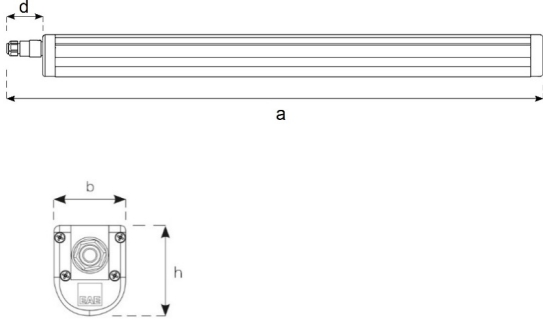
Correlated Color Temperatures	: 3000K, 5700K, 6500K
Emergency Kit Options	: 1, 3 hours
DALI Option	: Yes
Sensor	: Yes
KAM	: Yes

* KAM: Corridor Lighting Module

LINA ETANJ V.3

Surface Mounted 23 W Etanj LED Luminaire

3107092 LNE 023U 400D00 2K8 085 ST V.3

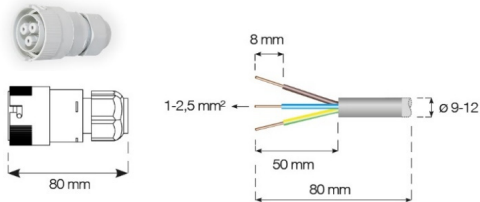


Dimension (mm)

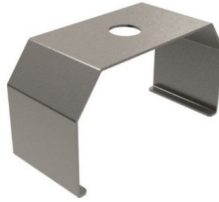
	a	b	h	d
Standard	920	65	83	70
With Emergency Kit (1 hr.)	920	65	83	70
With Emergency Kit (3 hrs.)	920	65	83	70
With Sensor	1025	65	83	70

Weight (kg)

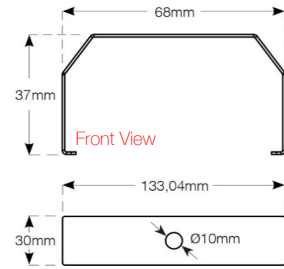
Standard	1,6
With Emergency Kit (1 hr.)	2
With Emergency Kit (3 hrs.)	2,5
With Sensor	1,9



Suspension Set



Stainless steel
suspension set



Top View

- EAE, reserves the right to make changes without prior notice.



Revision date: 28.06.2019