



# LINA ETANJ V.3

Surface Mounted 56 W Etanj LED Luminaire

Order Code : 3107644  
 Product Code : LNE 055U 40OD00 7K2 149 ST V.3



## Product Data

### Standard Features

Housing	: Aluminium extrusion housing
Diffuser	: Glare controlled opal diffuser
IP Grade	: IP65
Installation	: Surface mounted
Light Source	: Mid Power LED

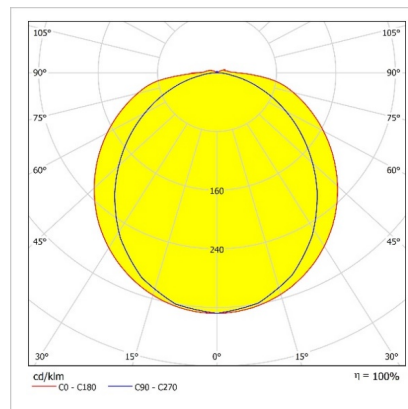
### Optical & Electrical Features

Power Consumption	: 56.1 W
Final Luminous Flux	: 7276.6 lm
Efficacy	: 129.6 lm/W
Input Voltage	: 220-240 V AC
Frequency	: 50-60 Hz
Power Factor	: > 0,9
Surge Transient Protection	: 1 kV
Drive Current	: 350 mA
Correlated Color Temperature	: 4000K
Color Rendering Index	: >80

### Other Features & Conditions

Operating Temperature Range	: -20 °C/+40 °C
Operating Temperature Range With Emergency Kit	: +5 °C/+35 °C
Impact Resistance	: IK09
Led Life Time - L70	: > 72.000 hours @Ta= 40 °C

## Photometric Curve



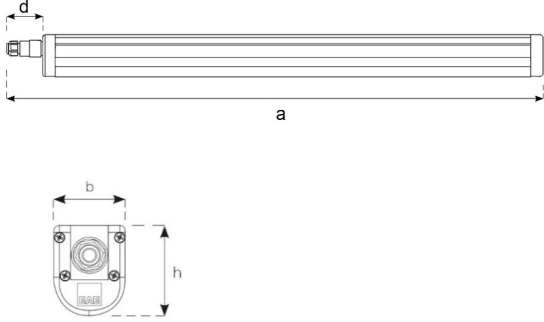
### Optional Features

Correlated Color Temperatures	: 3000K, 5700K, 6500K
Emergency Kit Options	: 1, 3 hours
DALI Option	: Yes
Sensor	: Yes

# LINA ETANJ V.3

Surface Mounted 56 W Etanj LED Luminaire

3107644 LNE 055U 400D00 7K2 149 ST V.3

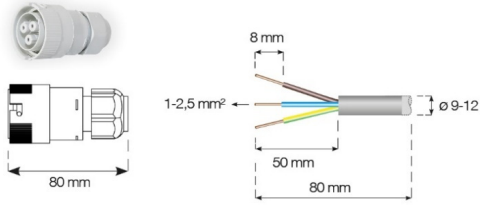


Dimension (mm)

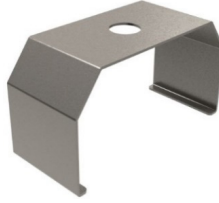
	a	b	h	d
Standard	1560	65	83	70
With Emergency Kit (1 hr.)	1560	65	83	70
With Emergency Kit (3 hrs.)	1560	65	83	70
With Sensor	1665	65	83	70

Weight (kg)

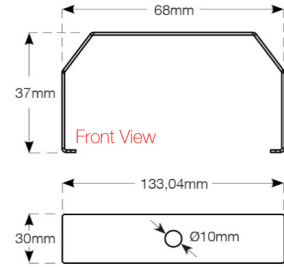
Standard	2,7
With Emergency Kit (1 hr.)	3,1
With Emergency Kit (3 hrs.)	3,6
With Sensor	3



## Suspension Set



Stainless steel  
suspension set



Top View

- EAE, reserves the right to make changes without prior notice.

**engineering the light**

EAE Aydınlatma A.Ş.  
İkitelli Organize Sanayi Bölgesi Eski Turgut Özal Caddesi No:20 Başakşehir / İSTANBUL-TURKEY Phone: +90 212 413 21 00 (pbx) Fax: +90 212 549 37 90  
www.eaeaydinlatma.com.tr

Revision date: 28.06.2019