



LINA ETANJ V.3

Surface Mounted 72 W Etanj LED Luminaire

Order Code : 3109974
 Product Code : LNE 072U 40OD00 9K1 149 PG V.3



Product Data

Standard Features

Housing	: Aluminium extrusion housing, pg cable gland
Diffuser	: Glare controlled opal diffuser
IP Grade	: IP65
Installation	: Surface mounted
Light Source	: Mid Power LED

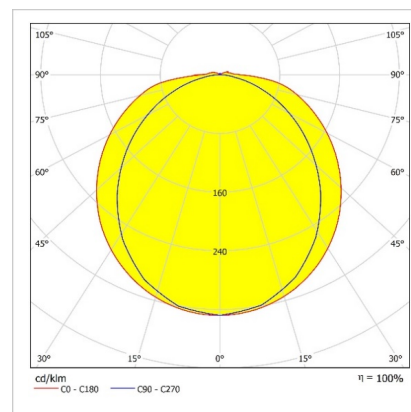
Optical & Electrical Features

Power Consumption	: 72.5 W
Final Luminous Flux	: 9074 lm
Efficacy	: 125.1 lm/W
Input Voltage	: 220-240 V AC
Frequency	: 50-60 Hz
Power Factor	: > 0,9
Surge Transient Protection	: 1 kV
Drive Current	: 475 mA
Correlated Color Temperature	: 4000K
Color Rendering Index	: >80

Other Features & Conditions

Operating Temperature Range	: -20 °C/+40 °C
Impact Resistance	: IK09
Led Life Time - L70	: > 72.000 saat @Ta= 40 °C

Photometric Curve



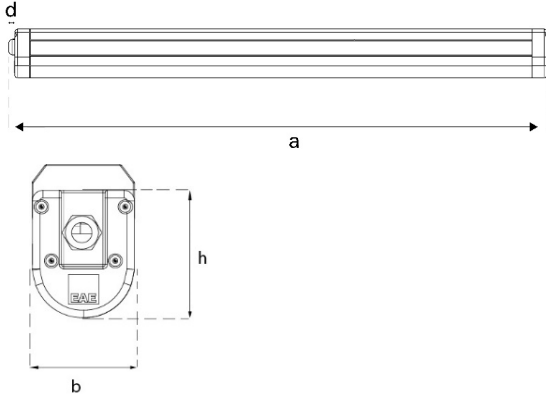
Optional Features

Correlated Color Temperatures	: 3000K, 5700K, 6500K
Emergency Kit Options	: No
DALI Option	: Yes
Sensor	: No

LINA ETANJ V.3

Surface Mounted 72 W Etanj LED Luminaire

3109974 LNE 072U 400D00 9K1 149 PG V.3



Dimension (mm)

	a	b	h	d
Standard	1505	65	83	15

Weight (kg)

Standard	2,7
----------	-----

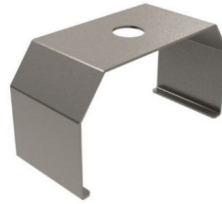


PG11 30mm

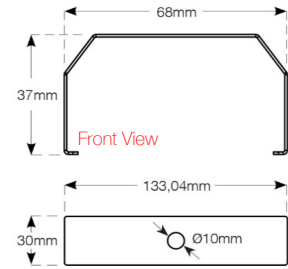


Standard Cable Dimension 50cm

Suspension Set



Stainless steel
suspension set



Top View

- EAE, reserves the right to make changes without prior notice.



Revision date: 28.06.2019